



PROJECT DELIVERABLE REPORT

DELIVERABLE NUMBER AND TITLE	D6.4
TITLE	FINALISATION OF DATABASE INTERFACE TRAINING PACK
AUTHOR(S)	PROFESSOR LORRAINE BRENNAN. DR. J. BOUWMAN AND DR NIELS HULSTAERT
WORK PACKAGE	WP 6
TASK	TASK 6.4
WP LEADER	PROFESSOR LORRAINE BRENNAN
BENEFICIARIES CONTRIBUTING TO THE DELIVERABLE	UCD, TCD, UCC, TNO
STATUS – VERSION	FINAL - VERSION 1.0
DELIVERY DATE (MONTH)	M15
SUBMISSION DATE	M15
DISSEMINATION LEVEL – SECURITY*	PU
DELIVERABLE TYPE**	R

* Security: PU – Public; PP – Restricted to other programme participants (including JPI Services); RE – Restricted to a group specified by the consortium (including JPI Services); CO – Confidential, only for members of the consortium (including JPI Services)

** Type: R – Report; P – Prototype; D – Demonstrator; - O - Other



JOINT PROGRAMMING INITIATIVE – A HEALTHY DIET FOR A HEALTHY LIFE EUROPEAN NUTRITION PHENOTYPE ASSESSMENT AND DATA SHARING INITIATIVE

CONTENTS

Introduction.....	3
Overview of the training material available	3
Conclusions.....	6



INTRODUCTION

We have developed a training pack of materials to show new users how to register, upload and export their study data within DASH-IN. This database interface training pack consists of the following;

- 1) A 48-minute tutorial video outlining all steps of the registration, data upload and export process for new users,
- 2) A set of sample descriptor and individual base excel files used within the tutorial and arranged in the optimal format for upload to the system, that users should use to modify to their own study data, 3) An example of the study output as it looks within the system when uploaded
- 4) A graphical explanation of the composition of the DASH-IN system detailing how each of the different sections interlink with each other.
- 5) A manual to guide users on how to install the OPAL and a manual to guide users to upload data into OPAL.

OVERVIEW OF THE TRAINING MATERIAL AVAILABLE

The training material has been added to the WP6 section of the ENPADASI website <http://www.enpadasi.eu/wp6.html> and notification of this has been circulated to all 50 ENPADASI centres by the central ENPADASI management team.

1. Trainings files- a series of training files were developed containing samples data so that people could use them to upload data. Including the following:
 - a. Genetics data file
 - b. Biochemistry data file
 - c. Subjects data file
 - d. Questionnaire data file
 - e. Physiology data file
2. The tutorial video outlines in detail with a voice over all the steps for uploading of data.
3. A quick start used guide was developed and available on the website.- see snapshots below-Figure X and Y
4. In order to facilitate the uploading we prepared an overview figure giving an overview of the files and the relation with the nomenclature system used in the Database- See Figure X.
5. An overview of the composition of the DASH-IN system detailing how each of the different sections interlink with each other is given in Figure Y.

Snapshots from the tutorial video are given below . Additionally a quick start used guide was developed and available once a person logs in.

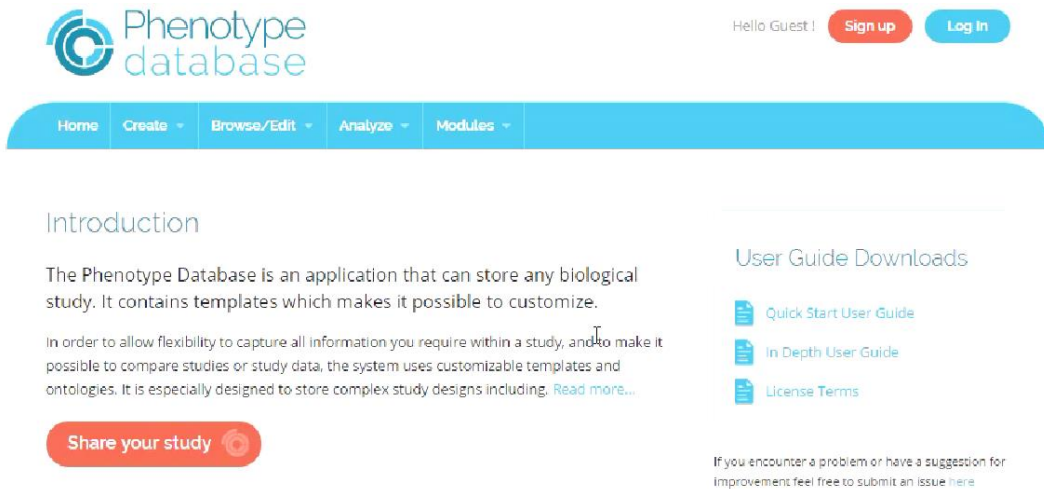


Figure 1. The login page for the Phenotype Database. The Quick Start User Guide can be downloaded from here.

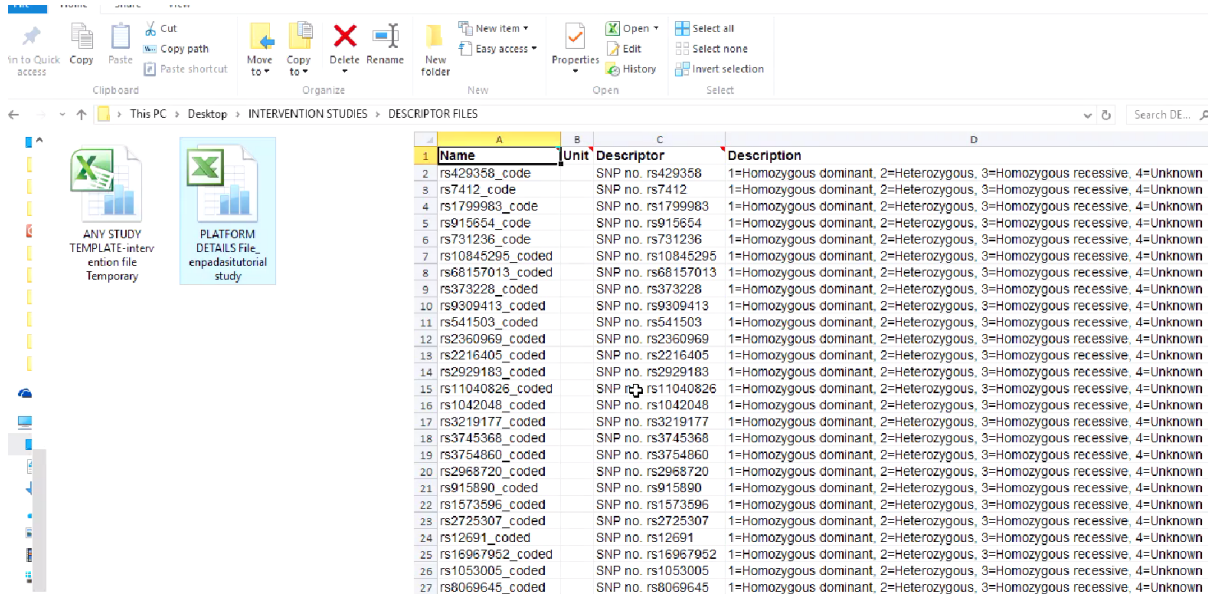
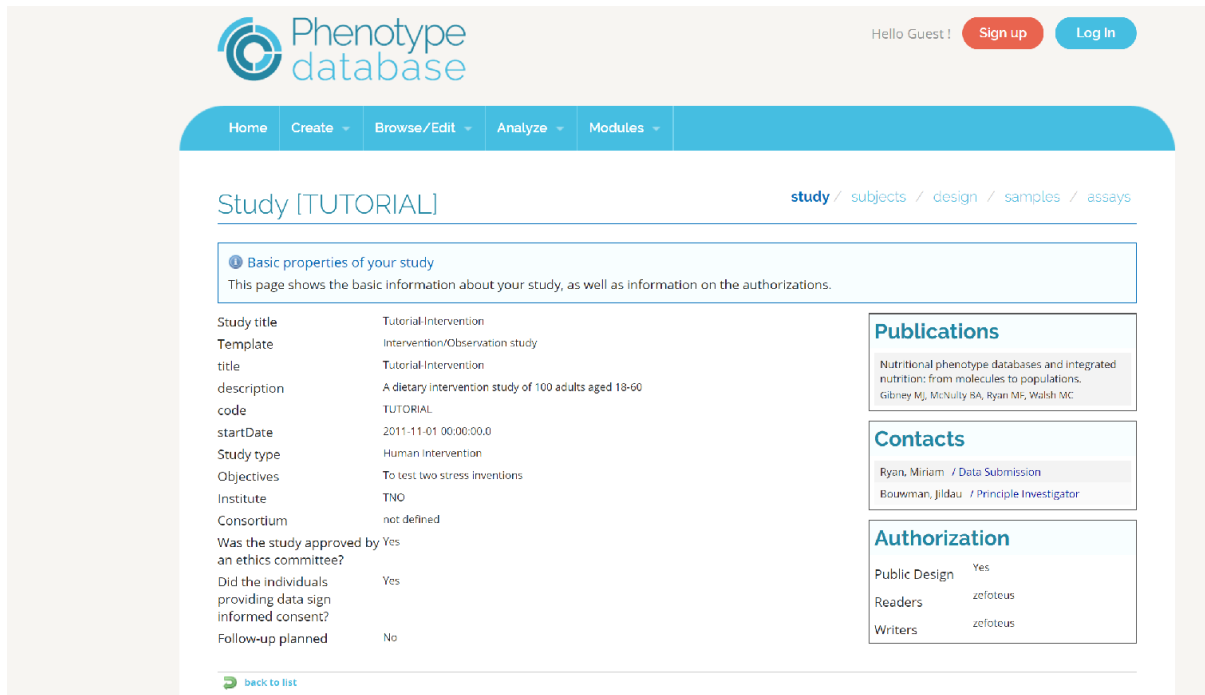


Figure 2. Snapshot from the video where there is a detailed explanation of the tutorial data files that are available for uploading.



The screenshot shows the Phenotype Database interface. At the top, there is a navigation bar with 'Home', 'Create', 'Browse/Edit', 'Analyze', and 'Modules'. The main content area is titled 'Study [TUTORIAL]' and includes a breadcrumb trail: 'study / subjects / design / samples / assays'. A section titled 'Basic properties of your study' provides a summary of the study details.

Basic properties of your study	
This page shows the basic information about your study, as well as information on the authorizations.	
Study title	Tutorial-Intervention
Template	Intervention/Observation study
title	Tutorial-Intervention
description	A dietary intervention study of 100 adults aged 18-60
code	TUTORIAL
startDate	2011-11-01 00:00:00.0
Study type	Human Intervention
Objectives	To test two stress interventions
Institute	TNO
Consortium	not defined
Was the study approved by an ethics committee?	Yes
Did the individuals providing data sign informed consent?	Yes
Follow-up planned	No

Additional sections on the right include:

- Publications:** Nutritional phenotype databases and integrated nutrition: from molecules to populations. Gibney MJ, McNully SA, Ryan ME, Walsh MC.
- Contacts:** Ryan, Miriam / Data Submission; Bouwman, Jildau / Principle Investigator.
- Authorization:** Public Design: Yes; Readers: zefoteus; Writers: zefoteus.

A 'back to list' link is located at the bottom left of the study details section.

Figure 3. Snapshot from video explaining what a study looks like within the Phenotype Database.

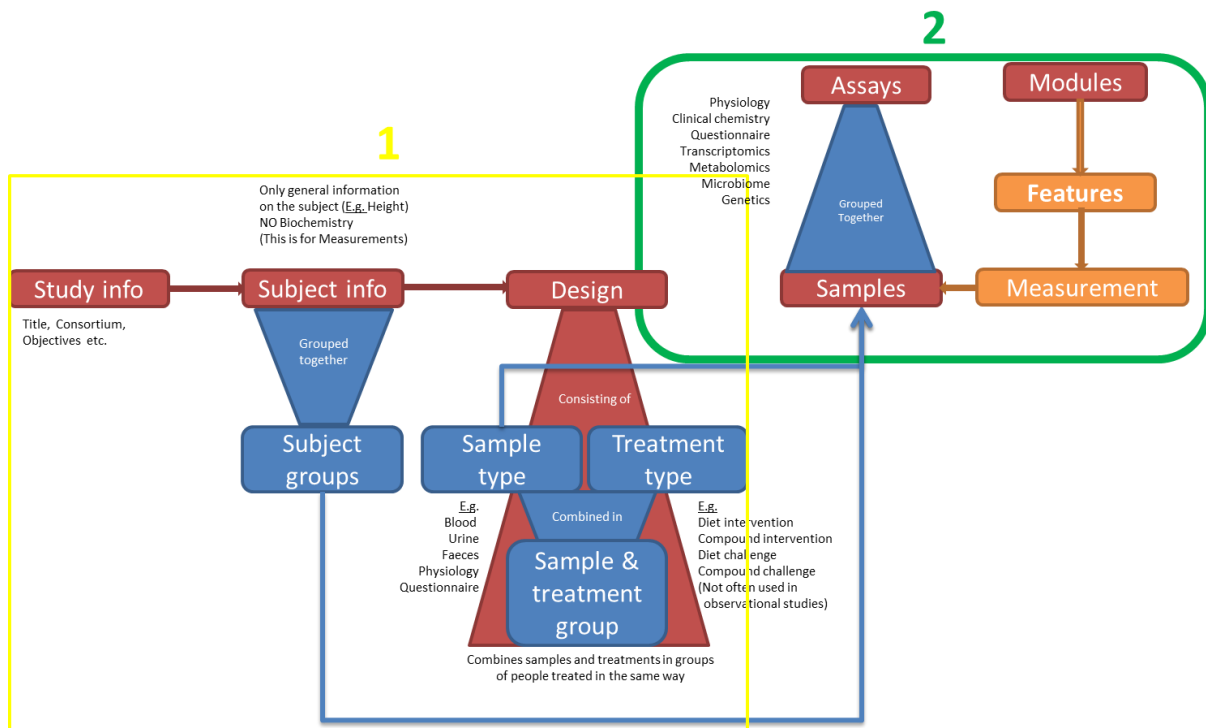


Figure 4. A graphical explanation of the composition of the DASH-IN system detailing how each of the different sections interlink with each other.

For OPAL- there are 2 manuals- one to guide the user on how to install OPAL. The details guide takes the user through each step. Screen shots are used to help explain the different steps and guide the users.

The second manual guides the user on data uploading into OPAL. It takes the user through the steps involved in uploading data into OPAL.

CONCLUSIONS

A comprehensive suite of tools are available to aid researchers to upload data.

With the combination of the tutorial files, the video and the user guide anyone wishing to upload data should be in a position to do so.

All files are currently available in the ENPADASI database and we endeavour to maintain this website after the end date of the project.